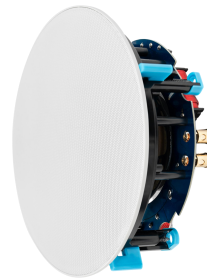


DW2230 DW2230S

2×30W WiFi Active Ceiling Speaker System



30W DW2230 Master Ceiling Speaker



30W DW2230S Slave Ceiling Speaker



Description

The DW2230 / DW2230S WiFi Active Ceiling Speaker System is a 2 × 30W, 6.5-inch active WiFi ceiling speaker system consisting of a master and slave speaker, delivering 60W total power for true stereo sound. The system supports multiple wireless streaming protocols including Apple AirPlay, DLNA, and QPlay, along with WiFi, Bluetooth, and line-in connectivity, all easily controlled through a mobile app.

Featuring a high-definition digital amplifier and a precision-tuned crossover, the system produces deep bass and clear, detailed highs for an enhanced listening experience.

The integrated amplifier output allows the master speaker to connect to a slave speaker for stereo playback or expand into a master-slave configuration, supporting one master speaker with up to three slave speakers and delivering up to 100W total output power for a more immersive audio experience.

In addition, the system supports multi-room audio control, enabling multiple WiFi ceiling speakers to be connected within the same network for synchronized or independent playback, creating a seamless whole-home wireless audio solution.

Features

- Supports Apple AirPlay, DLNA, and QPlay protocols via WiFi or Ethernet, enabling seamless LAN audio streaming.
- Simplified installation with minimal wiring—only a power cable is required when using WiFi, or the system can be connected via a PoE cable for both power and network.
- Supports WiFi, Bluetooth, and Line-in audio sources, which can be easily switched through the mobile app.
- 24-bit / 48 kHz audio sampling with a high-definition digital amplifier and optimized crossover, delivering powerful bass and clear, detailed highs for an immersive listening experience.
- Equipped with an amplifier output that allows connection to a slave speaker to form a master–slave stereo system with left and right channels, delivering 60W total output power. One master speaker can also be paired with up to three slave speakers, creating dual left and right channels with up to 100W total output power for high-quality stereo

playback.

- Multi-room audio control allows multiple WiFi ceiling speakers to be added to the same network, enabling synchronized or independent playback through the mobile app to create a wireless whole-house audio system.
- The speaker features a bright blue paper cone driver, an ultra-slim bezel, and a magnetic grille design for a clean architectural appearance. The high-quality coaxial driver and carefully tuned crossover deliver balanced highs and lows with refined sound performance.
- Ideal for sound-quality-focused environments such as villas, gyms, showrooms, meeting rooms, high-end retail stores, and upscale Chinese or Western restaurants.

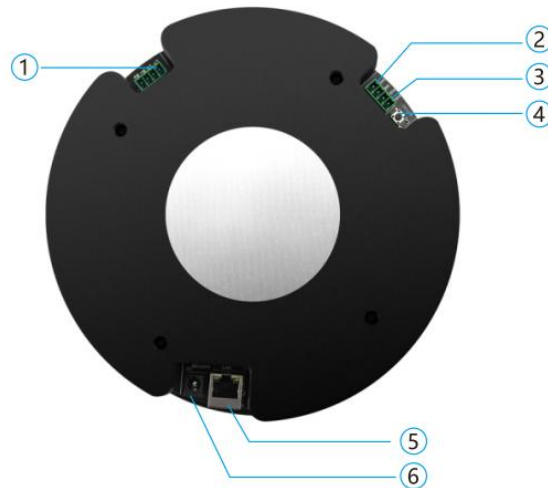
Specifications

Model	DW2230
Speaker Unit	6.5" Woofer×1, 1" Tweeter
Sensitivity (1W@1m)	88dB
Network Interface	External Standard RJ45, 10M/100M Ethernet Port
Wireless Parameter	Supports 802.11b/g/n Wireless Network
Input Power	48V POE++ or External 24V DC-5A Power Supply (Optional)
Pairing Reset Button	Press and Hold for 5 Seconds to Restore Factory Settings
Local Audio Input	200mVrms
Rated Impedance	8Ω
Audio Input	BT5.0, AUX IN
Network Push	WiFi 2.4G and LAN
Music Streaming Protocol	Airplay, DLNA, QPlay, etc.
Audio Format	MP3/AAC/FLAC/ALAC/WMA/APE/WAV/OGG, etc
Music Source	Tunein/iHeartRadio/TIDAL/Napster/Qobuz, etc
Operating Voltage	48V POE++ (IEEE802.3bt) or optional DC24V-5A adapter
Output Power	30W×2 (POE++ Power Supply) or 50W×2 (DC Power Supply) (Optional)
Frequency Response	55Hz-22kHz
Material	Panel & Rear Shell: ABS, Mesh: Iron
Color	Unit: Blue, Frame: Black, Grille: White
Product Dimension	Φ220*110H mm
Cut-Out Dimension	Φ205mm
Device Depth (mm)	115mm
Installation	4-Prong Rotating Mounting Bracket
Product Net Weight	1.5kg

Model	DW2230S
Speaker Unit	6.5" Woofer×1, 1" Tweeter
Rated Impedance	8Ω
Rated Power	30W
Max. Power	60W
Sensitivity (1W@1m)	88dB

Frequency Response	55Hz-22kHz
Material	Panel & Rear Shell: ABS, Mesh: Iron
Color	Black
Product Dimension	Φ220*90H mm
Cut-Out Dimension	Φ205mm
Device Depth (mm)	87mm
Installation	4-Prong Rotating Mounting Bracket
Product Net Weight	1.2kg

Front / Rear Panel



1. 2-channel power output interface, used to connect speakers with constant impedance output. It is recommended to use speakers of the same specification for optimal performance.
2. Bass audio output interface.
3. Local audio input interface.
4. WIFI pairing reset button, press and hold for 5 seconds to restore factory settings.
5. 10M/100M Ethernet port, used to connect to the local area network; support POE48V power supply function.
6. DC power interface, used to connect to a 24V DC power supply. (This function is optional.)